

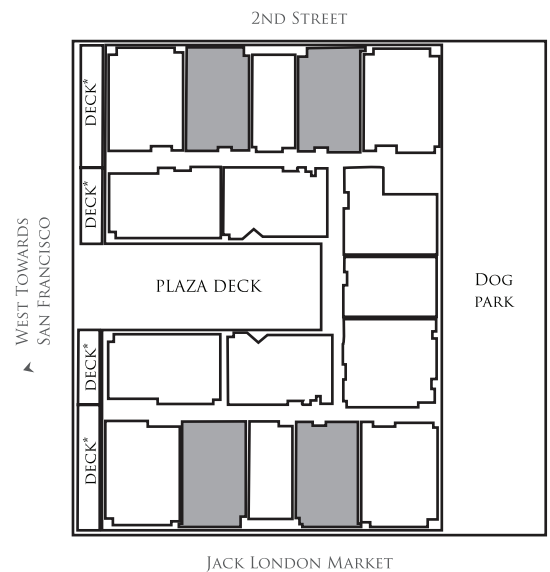
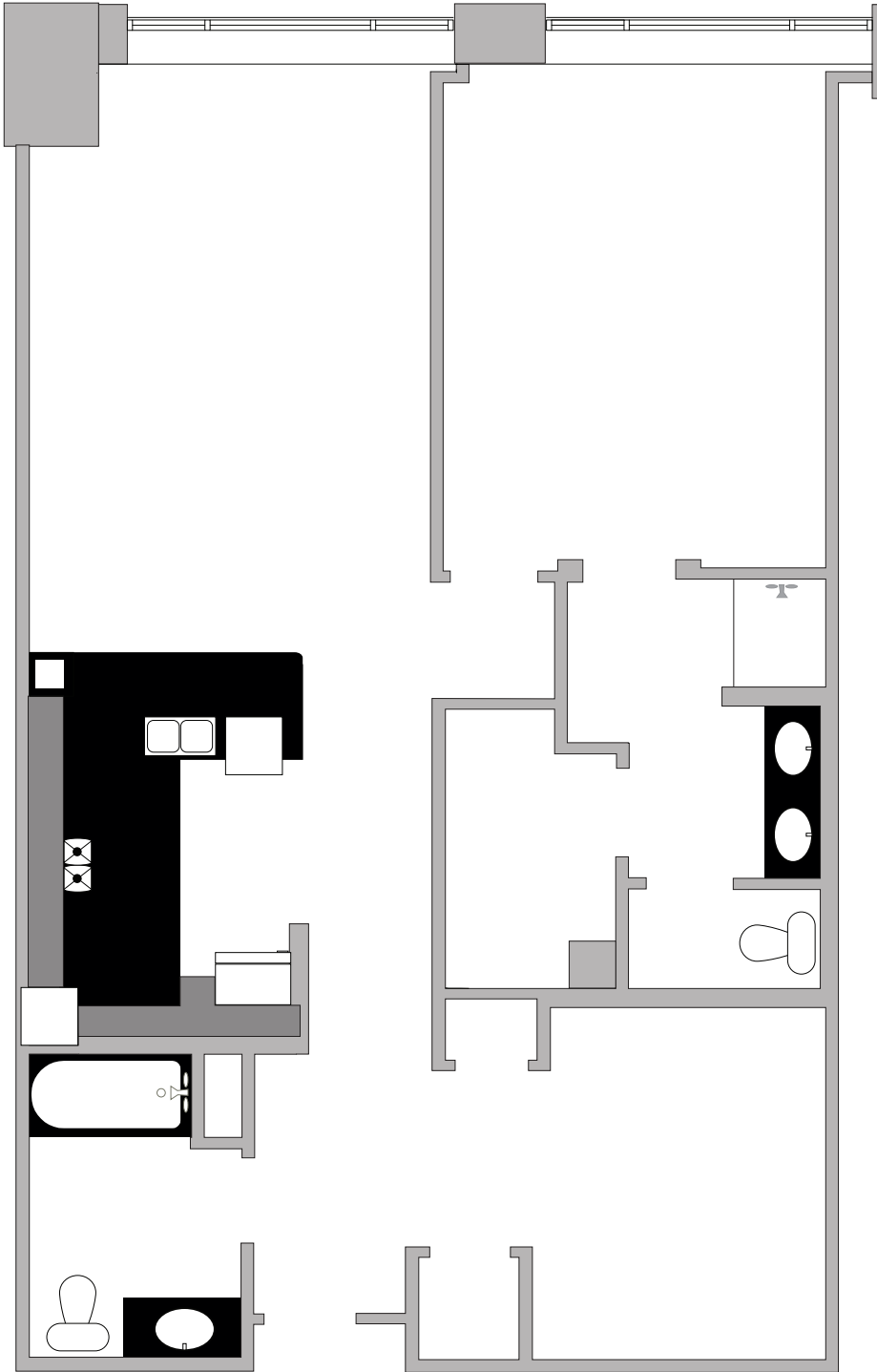
THE BOND

A MODERN CLASSIC
IN JACK LONDON SQUARE

PLAN# 03, 06, 13 & 15

1+ BEDROOM
2 BATHROOM

APPROXIMATELY
1,092 SQUARE FEET



Sales Gallery 311 2nd Street Oakland, CA 94607 | t: 510-834-2663 | e: service@thebondliving.com | thebondliving.com

Sales and Marketing by Polaris Pacific - a California licensed broker. DRE license #01499250

* All square footage references are approximations and should not be considered exact measurements. Prospective purchasers should engage a licensed professional to determine actual unit sizes. Floor plans, floor plates, elevations, renderings, features, finishes and specifications are subject to change at any time and should not be relied upon as exact representations, express or implied. The developer reserves the right to change floor plans, floor plates, elevations, features, finishes and specifications at any time, without prior notice.